

San Antonio Project



May 2016

Disclaimer

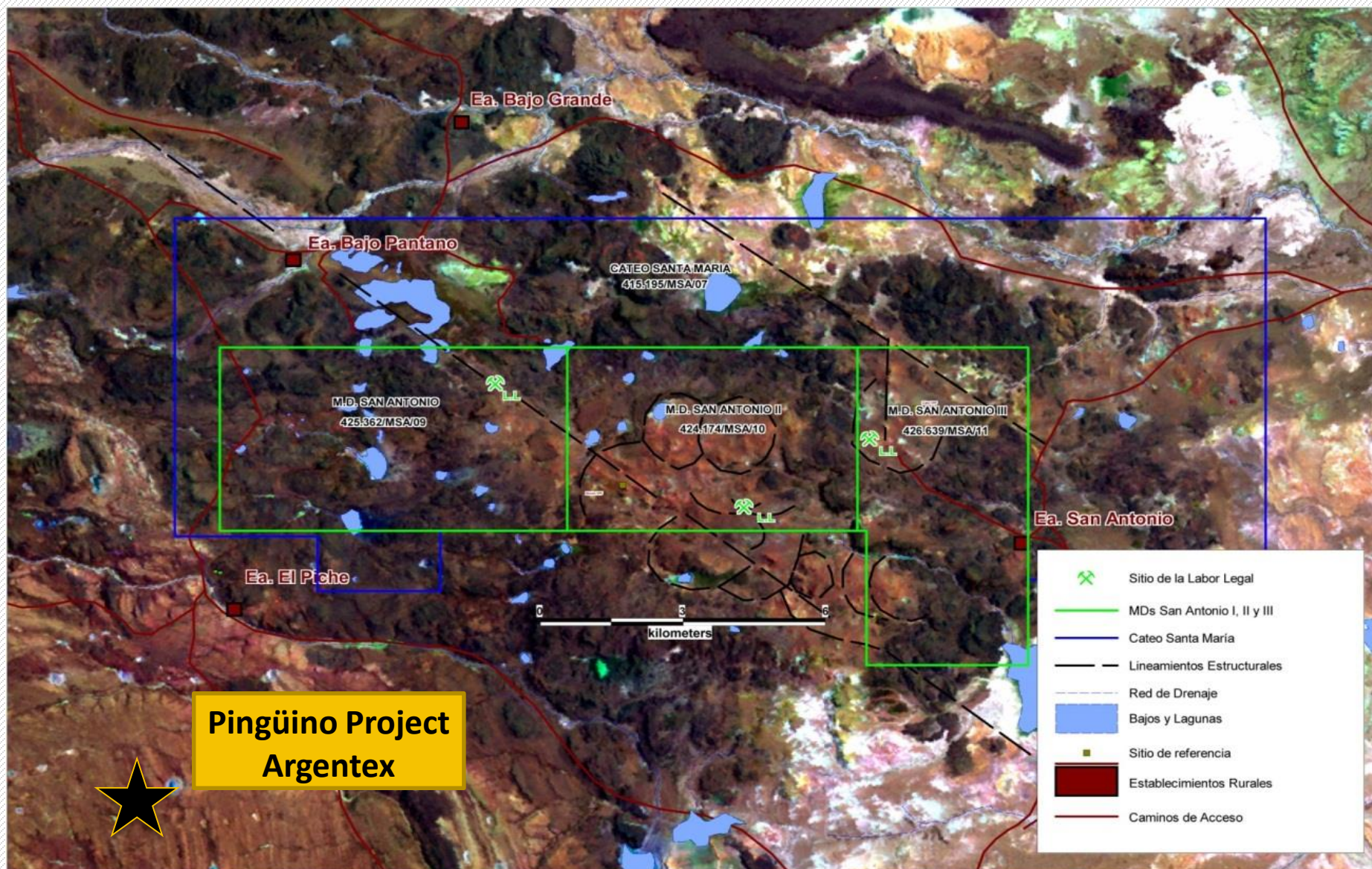
- *The content of this San Antonio Project Presentation “the Presentation” is intended to be strictly informational has been prepared by Minsud Resources Corp. (the “Company”) on the basis of information and sources believed to be reliable. Certain information contained herein is obtained from third party sources which we believe are reliable but cannot be guaranteed as to its accuracy or completeness. The Company reserves the right, at its sole discretion, to modify all or any part of this Presentation without any liability or notification to any person. This Presentation does not constitute, nor should be construed as, an offer or solicitation of an offer for the purchase of any securities of the Company, nor investment advice or an offering memorandum. Readers should review in conjunction with the Presentation all of the Company's public disclosure available under the Company's profile on www.sedar.com including its Filing Statement dated April 27, 2011 and the risk factors contained therein, and the technical report on its material properties.*
- *The Presentation does not take account the investment objectives, financial situation and particular needs of any particular person and is not intended to be considered by any person as general advice to any class of persons. You should not rely on the Presentation to make any decision, and if so, you shall bear the entire risk of such decision. You should also obtain relevant and specific professional advice to evaluate and assess the information contained in the Presentation*
- *The Company makes no representation or warranty, nor assumes any responsibility whatsoever, in respect to the Presentation. In no event shall the Company, its directors, officers, employees, agents or advisors be liable for any damages of any kind arising out of or relating to the use of this Presentation, including, but not limited to, any of loss of income or profits, incidental, special, indirect or consequential or any similar losses or damages, whether or not advised of the possibility of damages, and on any theory of liability, arising out of or in connection with the use of the Presentation.*
- *This Presentation must not be disclosed, copied, published, reproduced or distributed in whole or in part at any time without the prior written consent of the Company.*

Project Highlights

- The property is located 50 km north of the AngloGold-Ashanti Cerro Vanguardia Project and 6 km NNE of the Pingüino Property of Argentex Mining Corp.
- Mineral rights include three mining concessions (MDs) covering a total área of 8.000 ha, 100% owned by Minera Sud Argentina S.A.
- Exploration work may be conducted on a year round basis

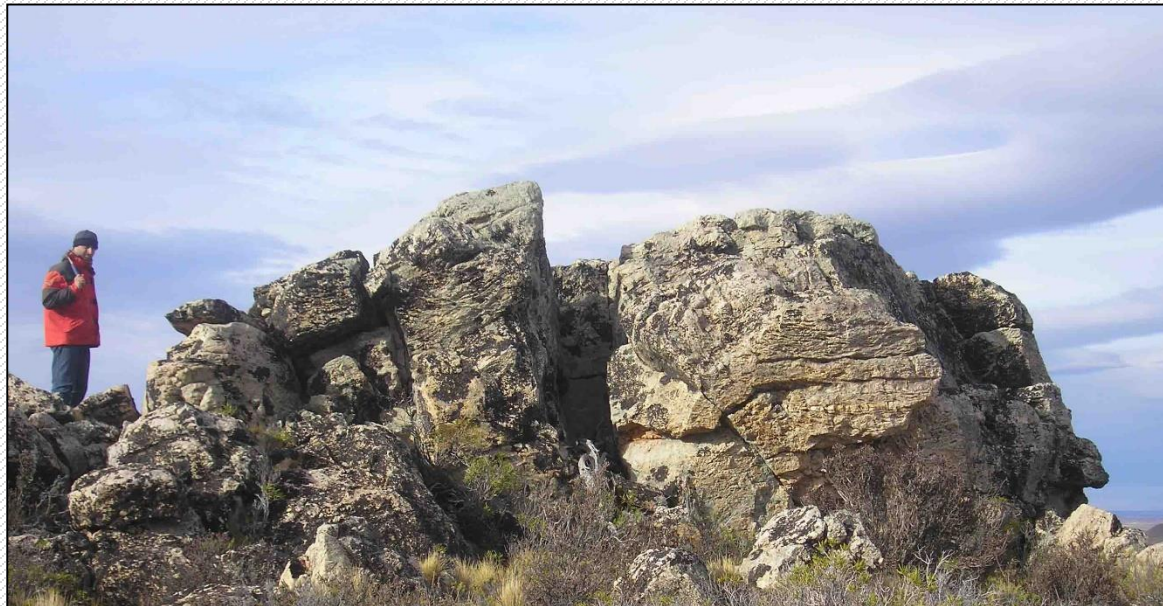


Mining concessions (San Antonio I, II and III)



Work Completed

- Regional geological reconnaissance
- Geological and Alteration mapping at 1:10,000 scale
- Collection of 138 rock geochemical samples.
- Selective mineralogical, petrographic, PIMA and fluid inclusion studies
- Geophysical work:
 - 16 Km of resistivity survey
 - 22 Magneto telluric soundings



Geology

Located in the Deseado Massif, the oldest rocks in the área comprise andesitic to basaltic volcanic and volcanoclastic (agglomerates) units of Jurassic age belonging to the Bajo Pobre Formation.

This is followed by the emplacement of a complex of extrusive domes and dykes of dacitic composition and volcanoclastic/epiclastic tuffs of the Jurassic Bahía Laura Group.



Completing the property geological framework are isolated outcrops of Lower Cretaceous sediments and pyroclastics of the Baquero Formation, olivine basaltic flows of the Upper Cretaceous Las Mercedes Formation and finally Tertiary basalts of the La Angelina Formation.

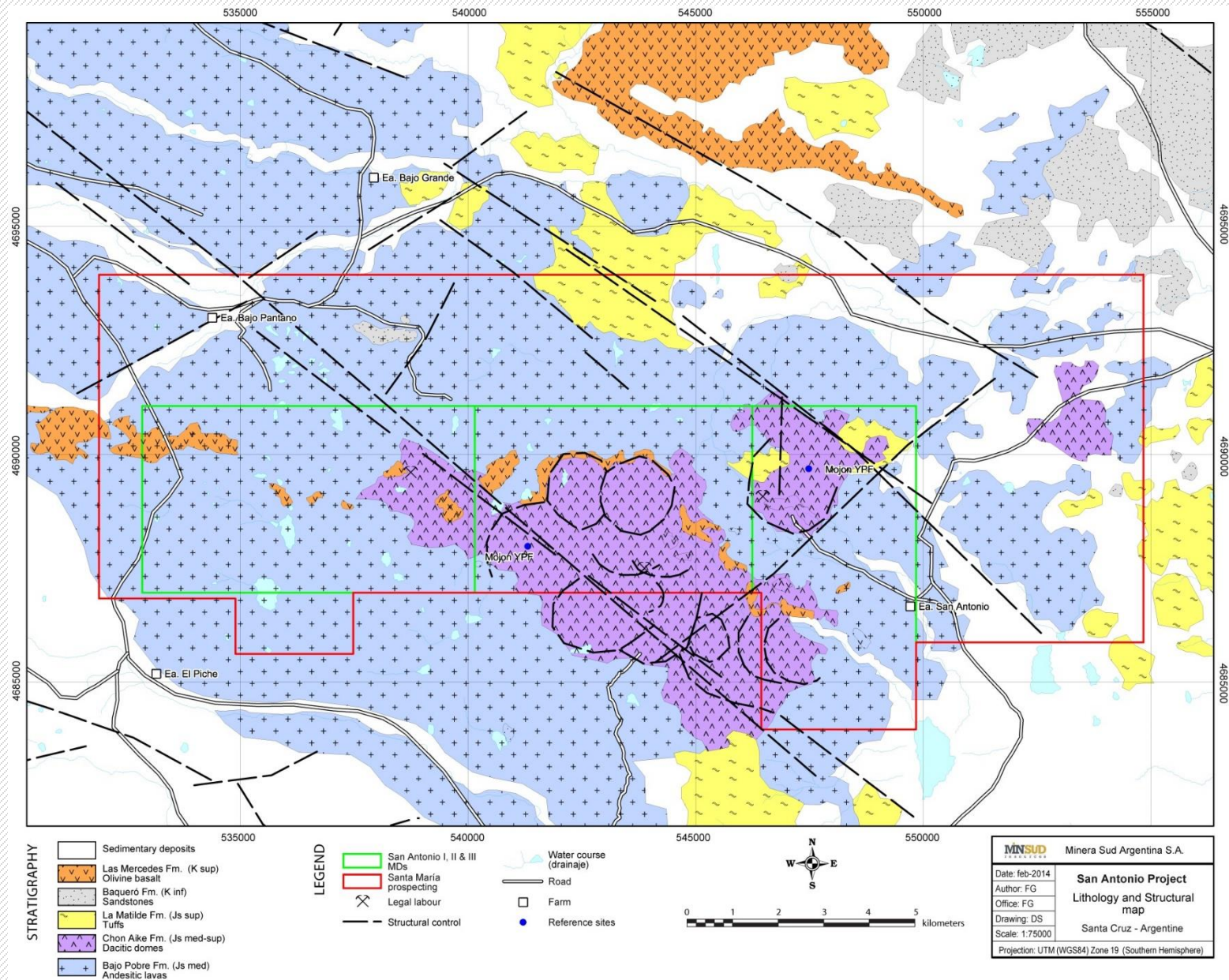
Structure

The Project covers a large zone of NW trending structural dislocations that occupy a valley 20 km long x 4 km wide that controls the distribution of geological units and hydrothermal alteration features.

Other structural features of relevance are a cluster of elliptical structures associated with a complex of domes with some indications of possible mar-diatreme systems.



Geology and Structural map

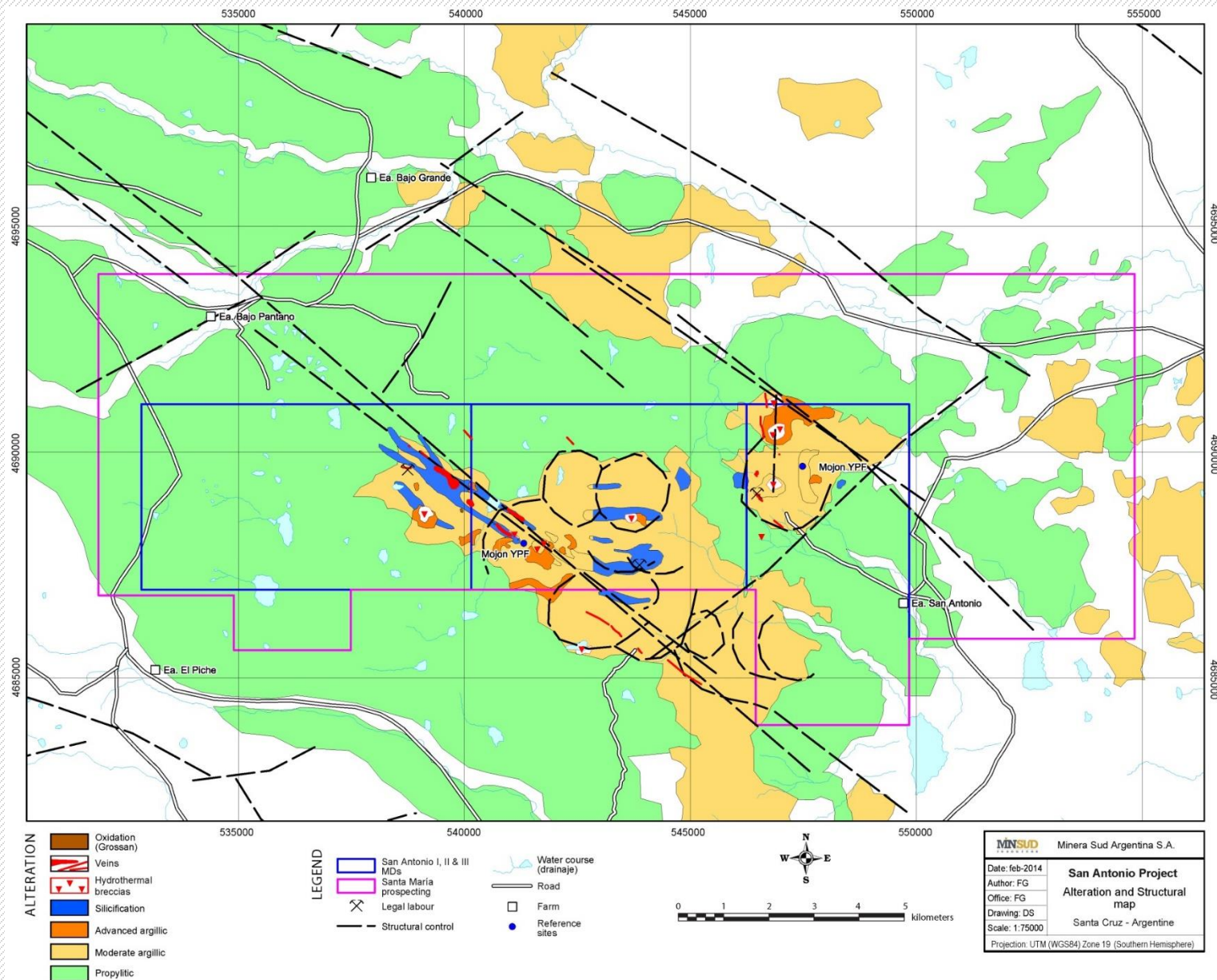


Hydrothermal Alteration

- Alteration processes are associated with the regional NW structure and the intrusion of dacitic domes.
- Alteration features are characteristic of a low sulphidation epithermal system associated with a geothermal field in a typical hot spring environment.
- Other features include; stromatolites, sinter, silica cap, a variety of low temperature epithermal quartz veins, vein swarms, stockwork and breccias associated with large areas of advanced argillic alteration. Such a system is favourable for the development of precious metals (Gold-Silver) mineralization.



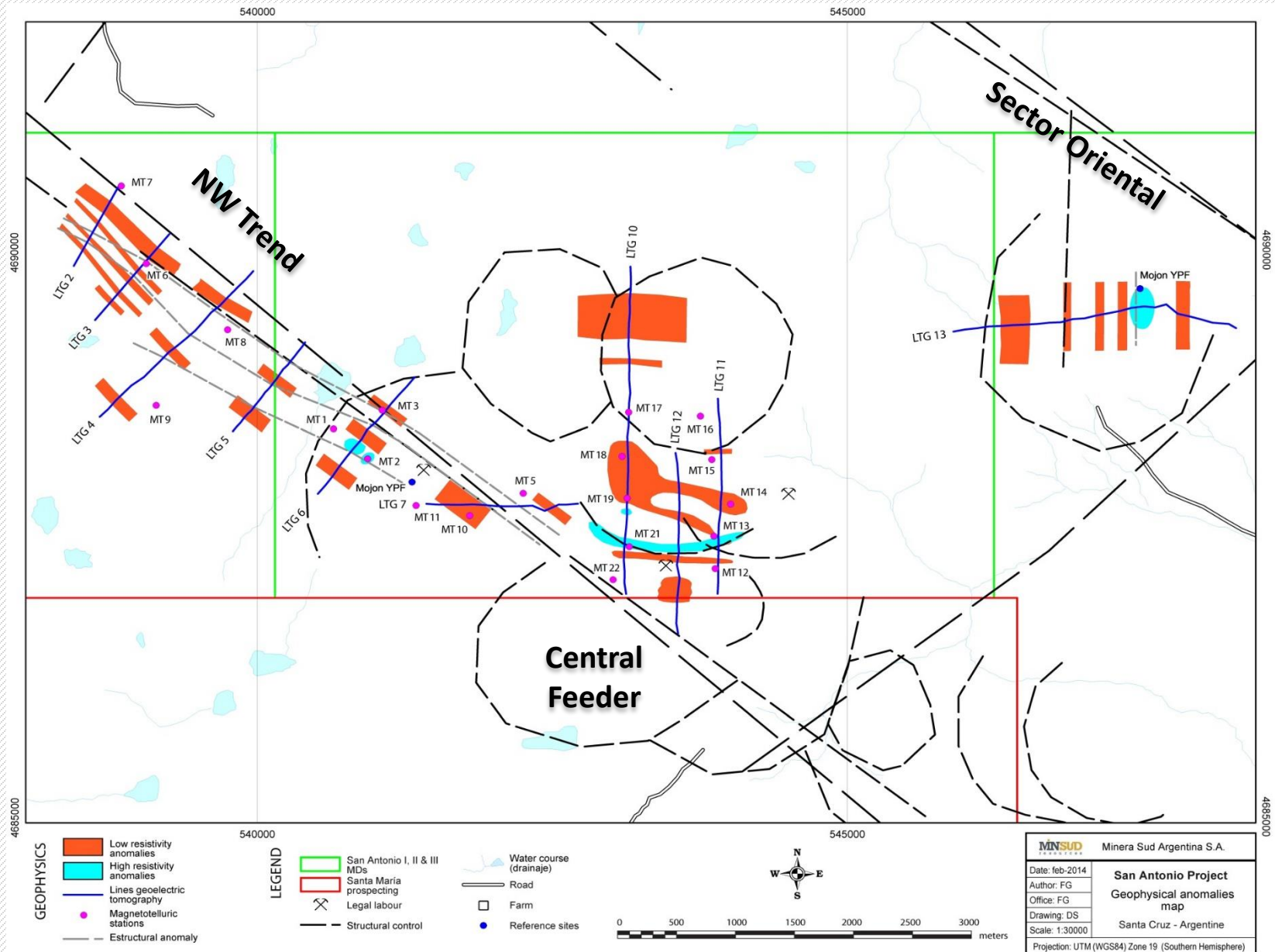
Alteration map



Exploration Targets

- **NW TREND:** This area is typified by multiple structural dislocations with widespread epithermal veining and advanced argillic alteration over an area measuring 700 m by 4.5 km. Anomalous pathfinder elements and low resistivity geophysical features indicate that this sector may be prospective for precious metal mineralization at modest depth.
- **CENTRAL FEEDER:** occupies an area of 2 km by 2 km. Areas intensely silicified. Strong anomalies in pathfinder elements, high resistivity anomalies. This sector is interpreted as the conduits for the circulation of hydrothermal fluids.
- **SECTOR ORIENTAL:** is the least explored area, which is characterized by a circular structure of 2 km diameter, cut by a regional N-S structural feature. Hydrothermal breccias associated with silicified domes, and banded quartz veins with anomalous pathfinder elements.

Resistivity & Magneto-teluric sounding location



Exploration Program Requirements

Systematic exploration program is required including:

- Detailed Geological and Alteration Mapping over all sectors
- Prospecting and Surface sampling
- Geochemical Survey
- Ground Magnetometer Survey
- IP/Resistivity test
- Drilling as warranted following multidisciplinary exploration



www.minsud.com | TSX.V - MSR

NORTH AMERICA | Headquarters

Minsud Resources Corp.

340 Richmond Street West,
Toronto, Ontario, Canada

Phone / Fax : +1 (416) 479 4466

SOUTH AMERICA | Headquarters

Minera Sud Argentina S.A.

Esmeralda 684 piso 13° - (CP. 1007)
Ciudad de Buenos Aires, Argentina

Phone / Fax : + 54 (11) 4328 4067

www.minsud.com